

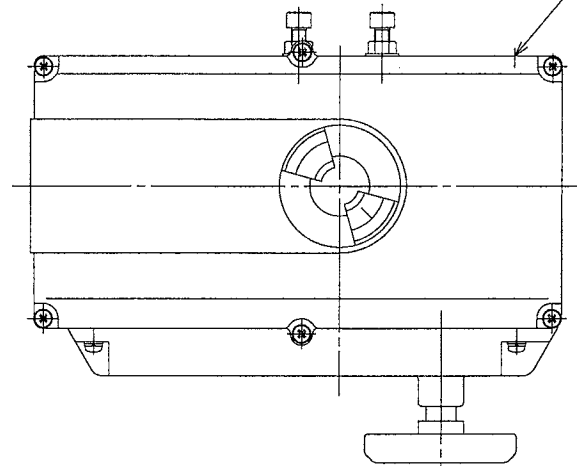
SIZE	d	L1	L2	g	H	H1	H2	H3	A	B	E	F	ACTUATOR SIZE	MASS (About)
50A	55	43	46	81	450.5	85.5	145	220	91	145	160	117	CRV-10A	13.5Kg
65A	66	46	49	99	459.5	84.5	155	220	91	145	160	117	CRV-10A	14.2Kg

SIZE	JIS5K			JIS10K		
	C	N	h	C	N	h
50A	105	2/4	14	120	2/4	18
65A	130	2/4	14	140	2/4	18

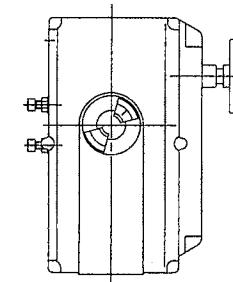
Table 1	Table 2	INSTALLATION
SCS13	NBR *1	INSTALLATION A
SCS14	EPDM*2	INSTALLATION B

CONDUIT ENTRY

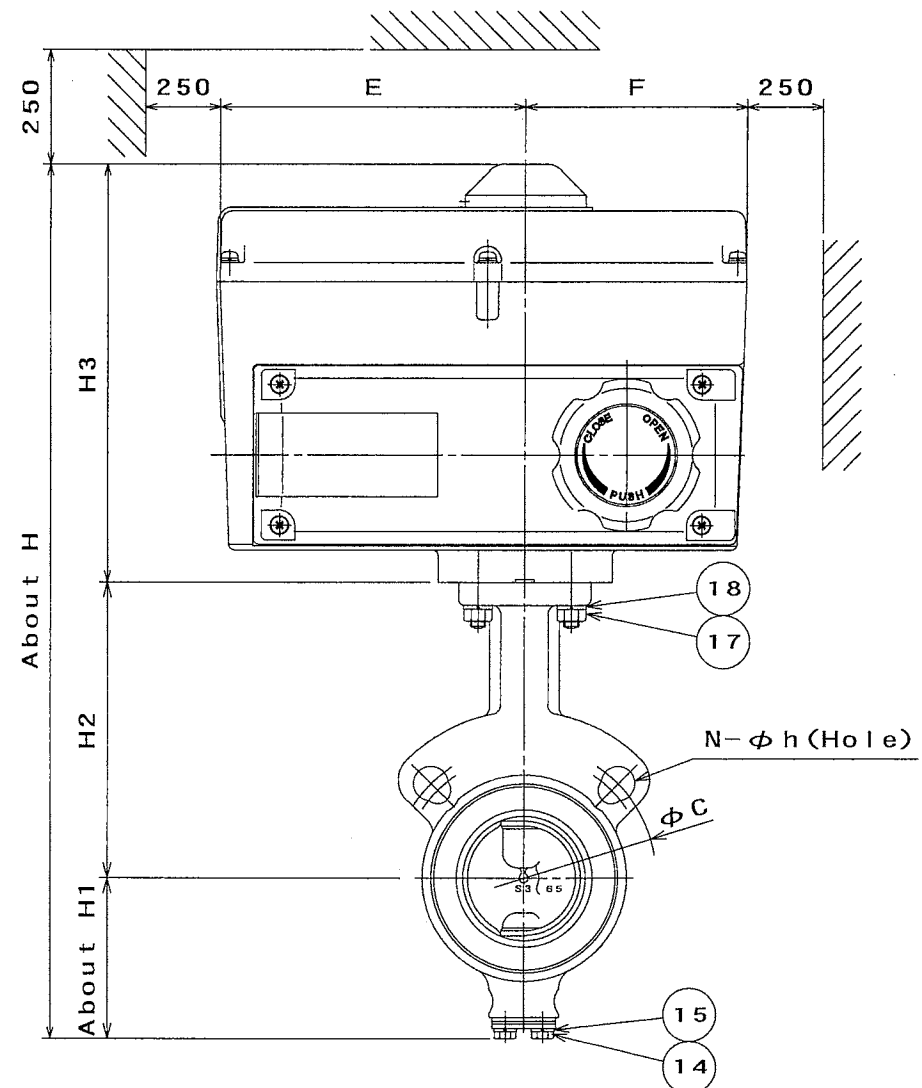
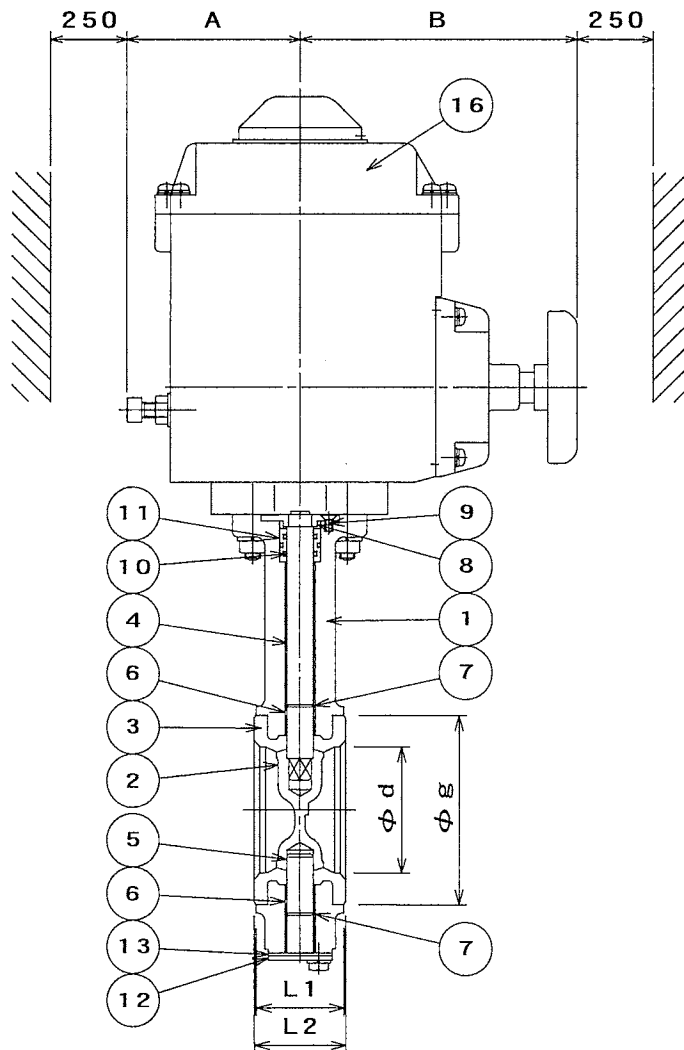
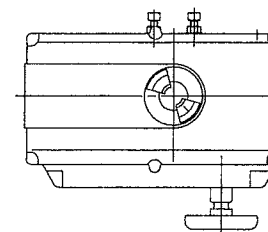
G1/2
G1/2
G3/4



INSTALLATION OF A



INSTALLATION OF B
STANDARD

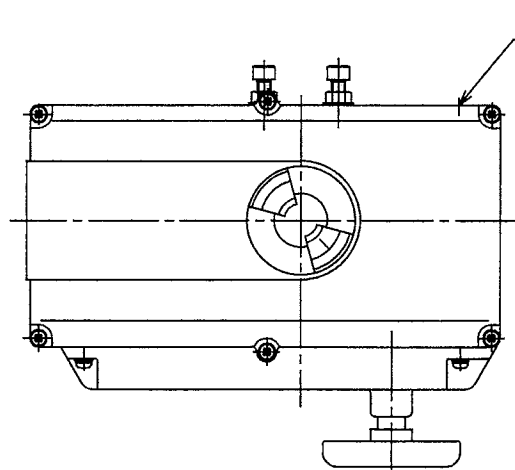


製番 MFG. NO.		名称及形式 NAME AND TYPE		
		MODEL 616J (50A, 65A) BUTTERFLY VALVES WITH ELECTRIC ACTUATOR		
番号 NO.	部品名称 PARTS NAME	材質 MATERIAL	数量 Q. ty	備考 REMARKS
1	BODY	FCD450	1	
2	DISC	See Table 1	1	
3	SEAT RING	See Table 2	1	LINING
4	UPPER STEM	SUS420J2	1	
5	LOWER STEM	SUS420J2	1	
6	BUSH	PLASTIC	1set	
7	RING	SUS304	1set	
8	NECK BUSH	PLASTIC	1	
9	SCREW	SUS304 [△]	4	
10	O-RING	NBR	1set	
11	SEAL RING	PLASTIC	1	
12	COVER	SPCC	1	PLATED
13	GASKET	See Table 2	1	
14	COVER BOLT	SUS304	2	
15	SPRING WASHER	SUS304	2	
16	ACTUATOR		1	
17	STUD BOLT, NUT	SUS304 [△]	4	
18	SPRING WASHER	SUS304 [△]	4	
19				
20				
21				
22				
23				
24				
25				
日付 DATE		MAY. 8, 2003		尺度 SCALE
				FREE
使用圧力 WORKING PRESSURE		Max 0.5/1.0 MPa P _e		使用温度*1: -10~70℃ WORKING TEMP. *2: -20~120℃ [△]
耐圧試験 SHELL TEST		1.5 MPa P _e		試験流体 TEST FLUID
				WATER
弁座試験 SEAT TEST		0.55/1.1 MPa P _e		許容漏れ LEAKAGE
				0 %
作成 DRAWN		検討 CHECKED		承認 APPROVED
S.Y		T.M		[Signature]
図面番号 DRAWING NO.		616J MC 0408 EB		FLOP. No.
				Hd-lan975
B JUL. 30, 2009 A Oct. 20, 2003		株式会社オーケーエム OKUMURA ENGINEERING corp.		

SIZE	d	L1	L2	g	H	H1	H2	H3	A	B	E	F	ACTUATOR SIZE	MASS (About)
80A	84	46	49	114	477.5	92.5	165	220	91	145	160	117	CRV-10A	14.6Kg
100A	100	52	55	136	498.5	98.5	180	220	91	145	160	117	CRV-10A	15.9Kg
125A	130	56	59	167	535.5	115.5	200	220	91	145	160	117	CRV-10A	17.7Kg
150A	154	56	59	192	565.5	130.5	215	220	91	145	160	117	CRV-20A	19.0Kg

SIZE	JIS5K			JIS10K		
	C	N	h	C	N	h
80A	145	2/4	18	150	2/8	18
100A	165	2/8	18	175	2/8	18
125A	200	2/8	18	210	2/8	22
150A	230	2/8	18	240	2/8	22

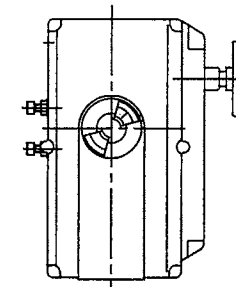
Table 1	Table 2	INSTALLATION
SCS13	NBR *1	INSTALLATION A
SCS14	EPDM*2	INSTALLATION B



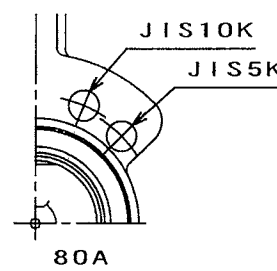
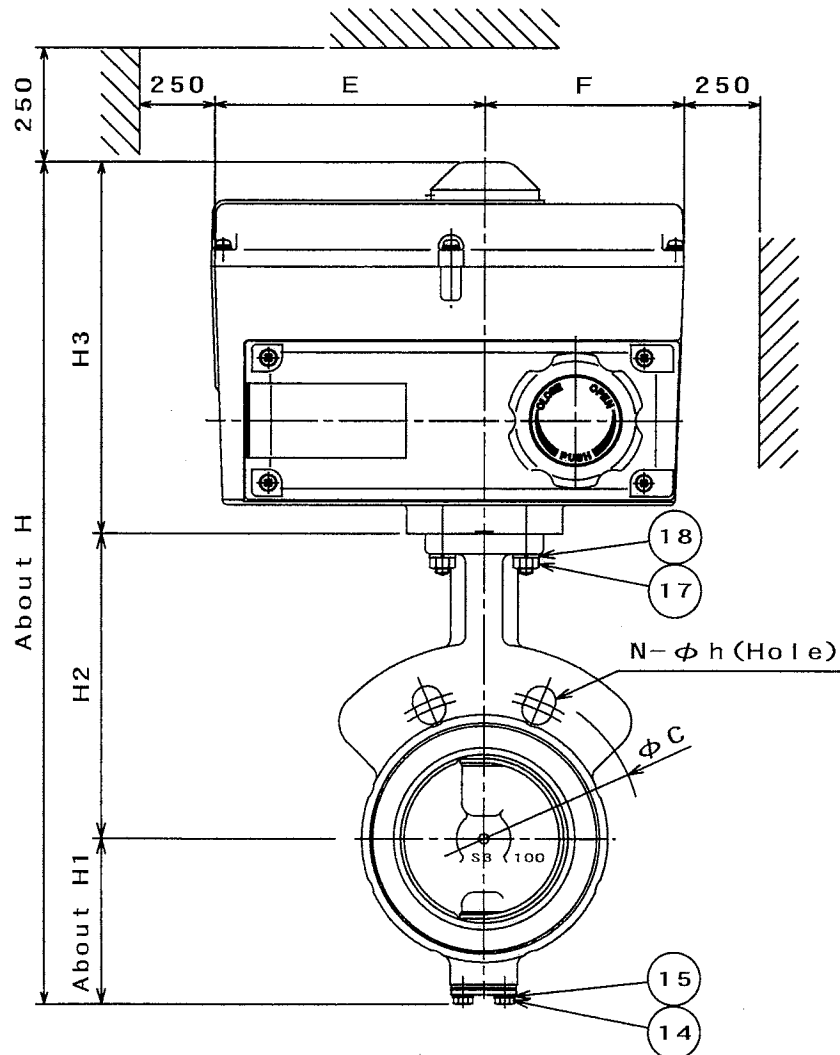
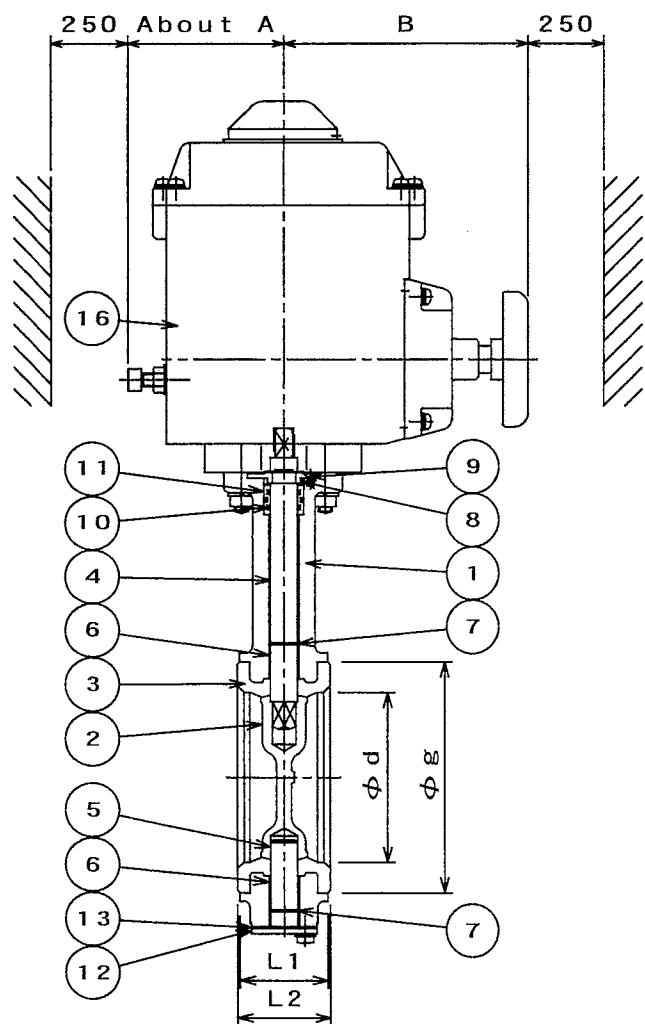
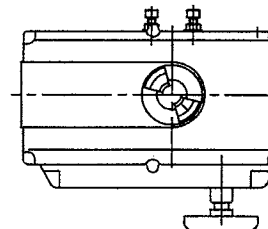
CONDUIT ENTRY

G1/2
G1/2
G3/4

INSTALLATION OF A



INSTALLATION OF B
STANDARD



△ JUL. 30, 2009
△ Mar. 14, 2006
△ Oct. 20, 2003

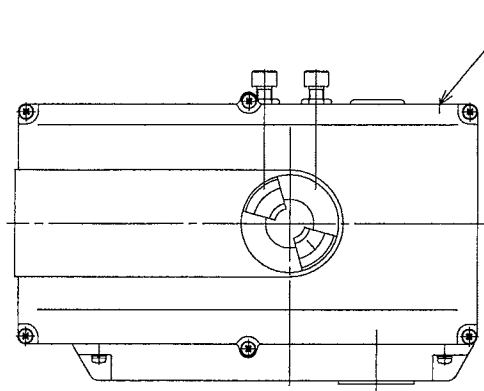
番号 NO.	部品名称 PARTS NAME	材質 MATERIAL	数量 Q. ty	備考 REMARKS
1	BODY	FCD450	1	
2	DISC	See Table 1	1	
3	SEAT RING	See Table 2	1	LINING
4	UPPER STEM	SUS420J2 [△]	1	
5	LOWER STEM	SUS420J2 [△]	1	
6	BUSH	PLASTIC	1set	
7	RING	SUS304	1set	
8	NECK BUSH	PLASTIC	1	
9	SCREW	SUS304 [△]	4	
10	O-RING	NBR	1set	
11	SEAL RING	PLASTIC	1	
12	COVER	SPCC	1	PLATED
13	GASKET	See Table 2	1	
14	COVER BOLT	SUS304 [△]	2	
15	SPRING WASHER	SUS304 [△]	2	
16	ACTUATOR		1	
17	STUD BOLT, NUT	SUS304 [△]	4	
18	SPRING WASHER	SUS304 [△]	4	
19				
20				
21				
22				
23				
24				
25				

日付 DATE	Apr. 28, 2003	尺度 SCALE	FREE
使用圧力 WORKING PRESSURE	Max 0.5/1.0 MPa P _e	使用温度*1 WORKING TEMP. *1	-10~70℃
耐圧試験 SHELL TEST	1.5 MPa P _e	試験流体 TEST FLUID	WATER
弁座試験 SEAT TEST	0.55/1.1 MPa P _e	許容漏れ LEAKAGE	0 %
作成 DRAWN	検討 CHECKED	承認 APPROVED	
株式会社 オークエム OKUMURA ENGINEERING corp.			
図面番号 DRAWING NO.	616J MC 0406 EC		FLOP. No. Hd-lan975

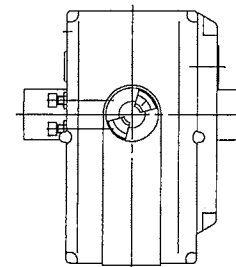
SIZE	d	L1	L2	g	H	H1	H2	H3	A	B	E	F	ACTUATOR SIZE	MASS (About)
200A	200	60	63	242	654.5	168.5	245	241	100	105	177	124	CRV-40A	27.5Kg

SIZE	JIS5K			JIS10K		
	C	N	h	C	N	h
200A	280	2/8	22	290	2/12	22

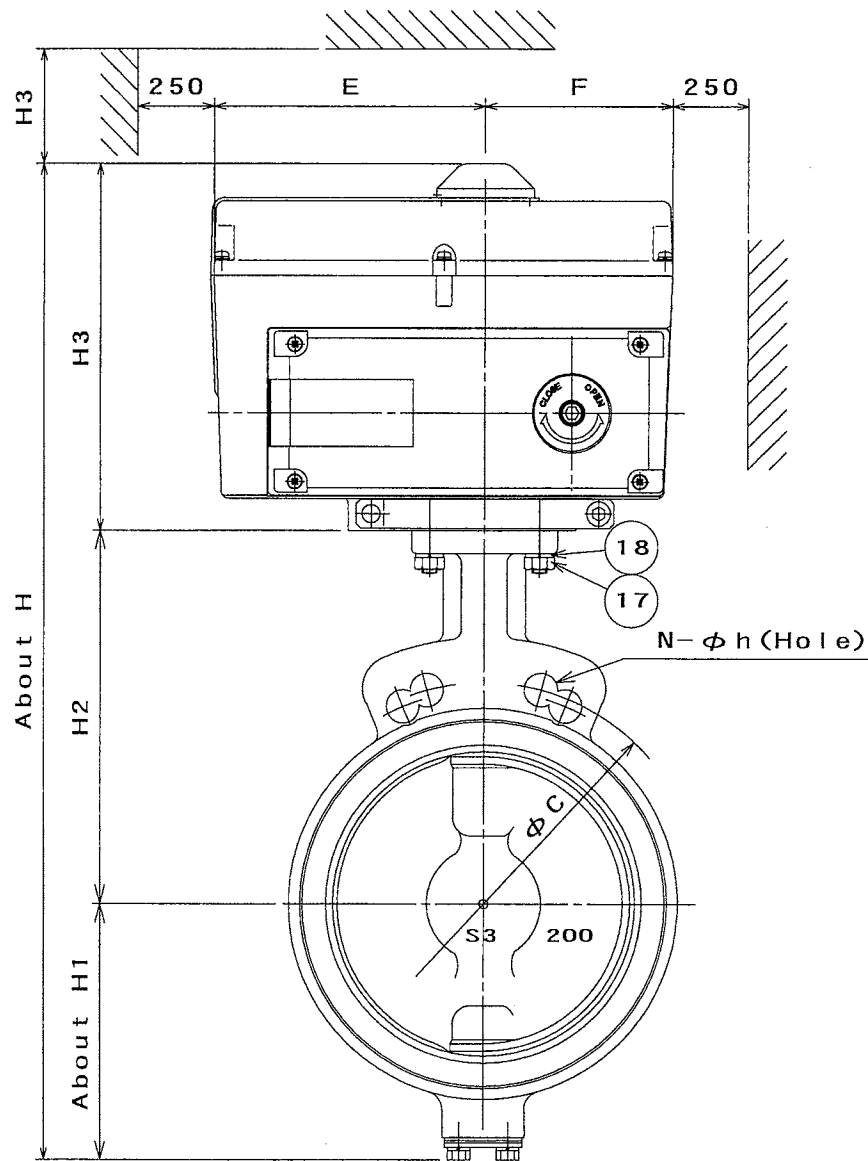
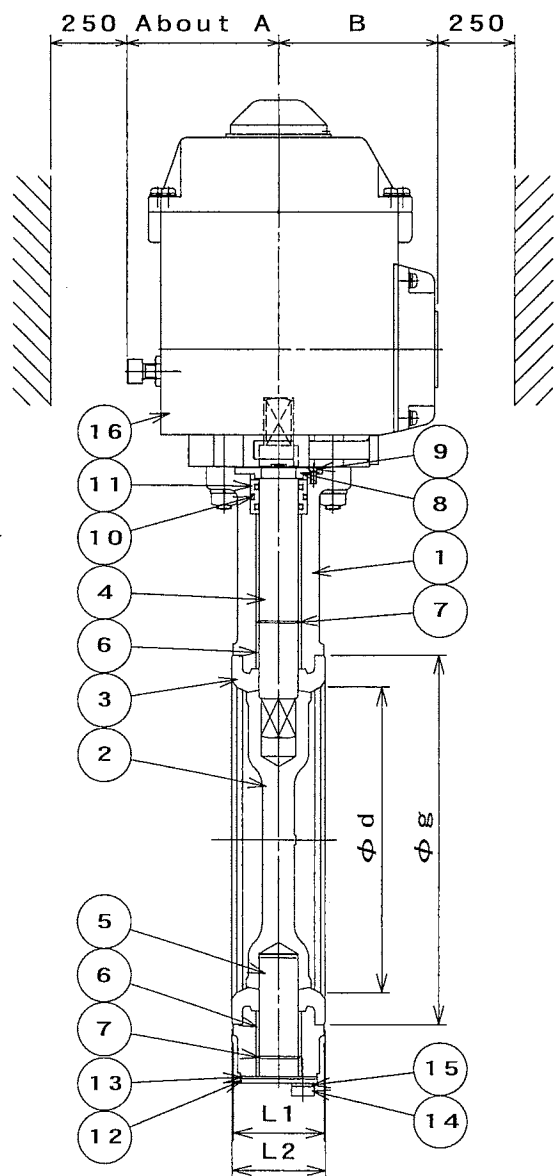
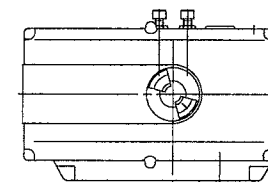
Table 1	Table 2	INSTALLATION
SCS13	NBR *1	INSTALLATION A
SCS14	EPDM*2	INSTALLATION B



INSTALLATION OF A



INSTALLATION OF B STANDARD



製番 MFG. NO.		名称及形式 NAME AND TYPE		
		MODEL 616J (200A) BUTTERFLY VALVES WITH ELECTRIC ACTUATOR		
番号 NO.	部品名称 PARTS NAME	材質 MATERIAL	数量 Q. ty	備考 REMARKS
1	BODY	FCD450	1	
2	DISC	See Table 1	1	
3	SEAT RING	See Table 2	1	LINING
4	UPPER STEM	SUS420J2 [△]	1	
5	LOWER STEM	SUS420J2 [△]	1	
6	BUSH	PLASTIC	1set	
7	RING	SUS304	1set	
8	NECK BUSH	PLASTIC	1	
9	SCREW	SUS304 [△]	4	
10	O-RING	NBR	1set	
11	SEAL RING	PLASTIC	1	
12	COVER	SPCC	1	PLATED
13	GASKET	See Table 2	1	
14	COVER BOLT	SUS304 [△]	2	
15	SPRING WASHER	SUS304 [△]	2	
16	ACTUATOR		1	
17	STUD BOLT, NUT	SUS304 [△]	4	
18	SPRING WASHER	SUS304 [△]	4	
19				
20				
21				
22				
23				
24				
25				
日付 DATE	Apr. 28, 2003	尺度 SCALE	FREE	
使用圧力 WORKING PRESSURE	Max 0.5/1.0 MPa P _e	使用温度#1 WORKING TEMP. #1	-10~70℃	
		使用温度#2 WORKING TEMP. #2	-20~120℃	
耐圧試験 SHELL TEST	1.5 MPa P _e	試験流体 TEST FLUID	WATER	
弁座試験 SEAT TEST	0.55/1.1 MPa P _e	許容漏れ LEAKAGE	0 %	
作成 DRAWN	検討 CHECKED	承認 APPROVED		
	S.Y	7.7	[Signature]	
図面番号 DRAWING NO.		FLOP. No.		
616J MC 0407 EB		Hd-lan975		

[△] JUL. 30, 2009
[△] Oct. 20, 2003

OKM 株式会社オーケーエム
OKUMURA ENGINEERING corp.