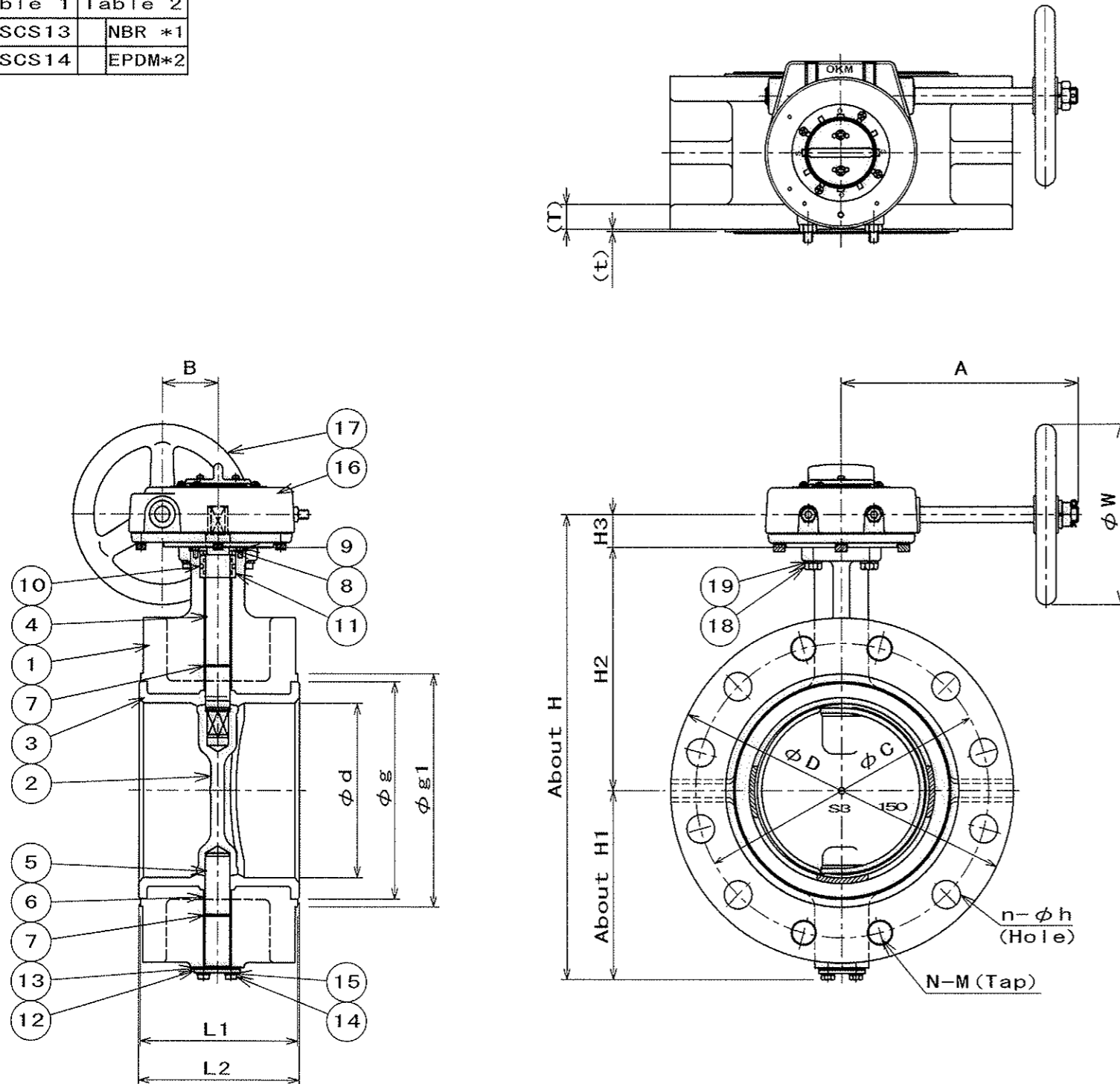


SIZE	d	D	L1	L2	g	g1	H	H1	H2	H3	T	t	A	B	W	GEAR SIZE	MASS (About)
80A	84	200	114	117	114	124	303.5	111.5	165	27	22.3	2	141	35	100	4K	13.3kg
100A	100	230	127	130	136	146	334.5	127.5	180	27	22.3	2	141	35	100	4K	18.8kg
125A	130	270	140	143	167	179	278.5	150.5	200	28	24	2	182	41	125	8K	26.4kg
150A	154	305	140	143	192	206	411.5	167.5	215	29	26	2	211	51	160	16K	32.4kg

SIZE	JIS10K					JIS16K/20K					ASME125Lb/150Lb				
	C	N	n	h	M	C	N	n	h	M	C	N	n	h	M
80A	150	4/8	4/8	19	M16	160	4/8	4/8	23	M20	152.4	-	4/4	19	-
100A	175	4/8	4/8	19	M16	185	4/8	4/8	23	M20	190.5	4/8	4/8	19	5/8-11UNC
125A	210	4/8	4/8	23	M20	225	4/8	4/8	25	M22	215.9	4/8	4/8	22	3/4-10UNC
150A	240	4/8	4/8	23	M20	260	4/12	8/12	25	M22	241.3	4/8	4/8	22	3/4-10UNC

Table 1	Table 2
SCS13	NBR *1
SCS14	EPDM*2



製 番
MFG. NO.

名称及形式
NAME AND TYPE MODEL 618F (80A~150A)
BUTTERFLY VALVES WITH
WORM GEAR OPERATOR

番号 NO.	部品名称 PARTS NAME	材質 MATERIAL	数量 Q. ty	備 考 REMARKS
1	BODY	FCD450	1	
2	DISC	See Table 1	1	
3	SEAT RING	See Table 2	1	LINING
4	UPPER STEM	SUS420J2	1	
5	LOWER STEM	SUS420J2	1	
6	BUSH	PLASTIC	1set	
7	RING	SUS304	1set	
8	NECK BUSH	PLASTIC	1	
9	SCREW	SUS304	4	
10	O-RING	See Table 2	1set	
11	SEAL RING	PLASTIC	1	
12	COVER	SPCC	1	PLATED
13	GASKET	See Table 2	1	
14	COVER BOLT	SUS304	2	
15	SPRING WASHER	SUS304	2	
16	GEAR BOX	FC250	1	
17	HAND WHEEL	FC250	1	
18	BOLT	SWRCH	4	PLATED
19	SPRING WASHER	SWRH	4	PLATED
20				
21				
22				
23				
24				
25				

日付
DATE JUL. 20. 2016 尺 度
SCALE FREE

使用 圧 力
WORKING PRESSURE Max 1.6 MPa_{Pe} 使用 温 度
WORKING TEMP. *1:-10~70℃ *2:-20~120℃

耐 圧 試 験
SHELL TEST 2.4 MPa_{Pe} 試 験 流 体
TEST FLUID WATER

弁 座 試 験
SEAT TEST 1.8 MPa_{Pe} 許 容 漏 れ
LEAKAGE 0 %

作 成
DRAWN 検 討
CHECKED 承 認
APPROVED

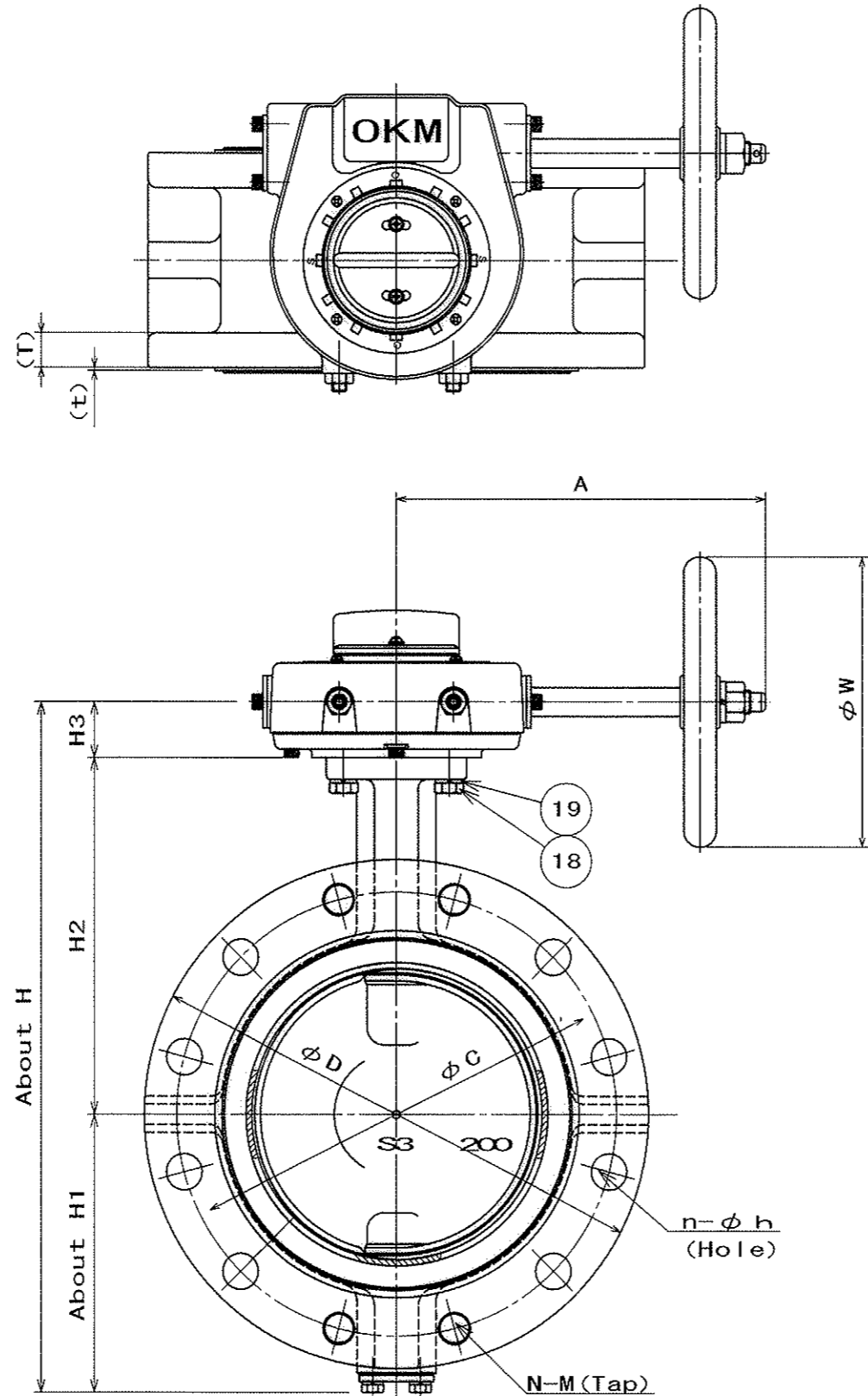
OKM 株式会社 オークエム
OKUMURA ENGINEERING corp.

図 面 番 号
DRAWING NO. 618F GB 0104 E FLOP. No.
HD

SIZE	d	D	L1	L2	g	g1	H	H1	H2	H3	T	t	A	B	W	GEAR SIZE	MASS (About)
200A	200	350	152	155	242	252	475	191.5	245	38.5	28	2	255	73.9	200	63K	52.0kg

SIZE	JIS10K					JIS16K/20K					ASME125Lb/150Lb				
	C	N	n	h	M	C	N	n	h	M	C	N	n	h	M
200A	290	4/12	8/12	23	M20	305	4/12	8/12	25	M22	298.5	4/8	4/8	22	3/4-10UNC

Table 1	Table 2
SCS13	NBR *1
SCS14	EPDM*2



製番 MFG. NO.

名称及形式 MODEL 618F (200A)
NAME AND TYPE BUTTERFLY VALVE WITH WORM GEAR OPERATOR

番号 NO.	部品名称 PARTS NAME	材質 MATERIAL	数量 Q. ty	備考 REMARKS
1	BODY	FCD450	1	
2	DISC	See Table 1	1	
3	SEAT RING	See Table 2	1	LINING
4	UPPER STEM	SUS420J2	1	
5	LOWER STEM	SUS420J2	1	
6	BUSH	PLASTIC	1set	
7	RING	SUS304	1set	
8	NECK BUSH	PLASTIC	1	
9	SCREW	SUS304	4	
10	O-RING	See Table 2	1set	
11	SEAL RING	PLASTIC	1	
12	COVER	SPCC	1	PLATED
13	GASKET	See Table 2	1	
14	COVER BOLT	SUS304	2	
15	SPRING WASHER	SUS304	2	
16	GEAR BOX	FC250	1	
17	HAND WHEEL	FC250	1	
18	BOLT	SWRCH	4	PLATED
19	SPRING WASHER	SWRH	4	PLATED
20				
21				
22				
23				
24				
25				

日付 DATE JUL. 20. 2016 尺度 SCALE FREE

使用圧力 WORKING PRESSURE Max 1.6 MPa Pe 使用温度*1: -10~70℃ WORKING TEMP. *2: -20~120

耐圧試験 SHELL TEST 2.4 MPa Pe 試験流体 TEST FLUID WATER

弁座試験 SEAT TEST 1.8 MPa Pe 許容漏れ LEAKAGE 0%

作成 DRAWN 核計 CHECKED 承認 APPROVED

OKM 株式会社 オークエム OKUMURA ENGINEERING co.,ltd.

図面番号 DRAWING NO. 618F GB 0105 E FLOP. No. Hd-Ian975

SIZE	d	D	L1	L2	g	g1	H	H1	H2	H3	T	t	A	B	W	GEAR SIZE	MASS (About)
250A	246	430	165	168	299	317	554.7	233	283.2	38.5	32	2	255	73.9	200	63K	80.5kg
300A	295	485	178	181	348	360	611.7	260	313.2	38.5	33	3	255	73.9	200	63K	105.0kg

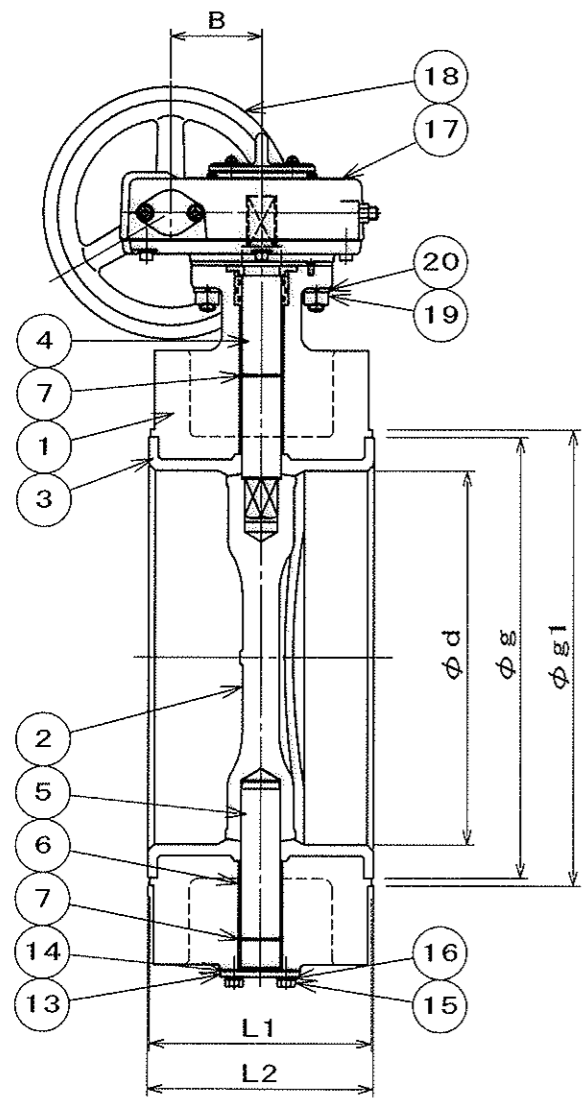
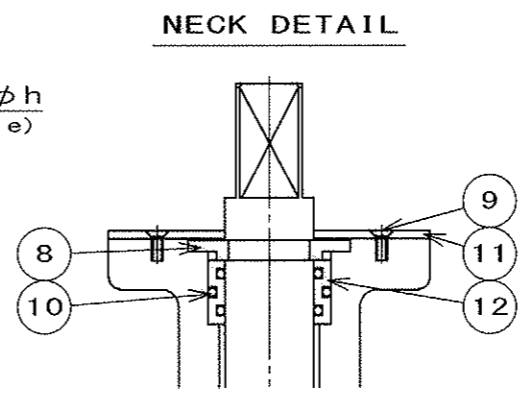
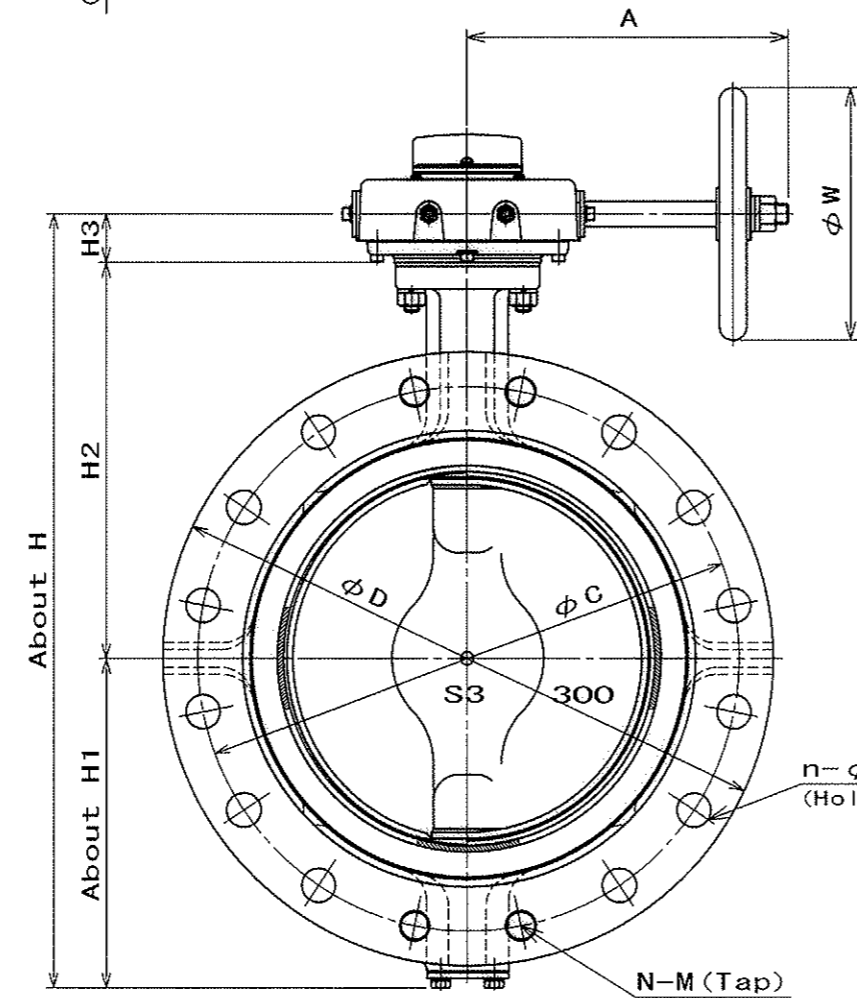
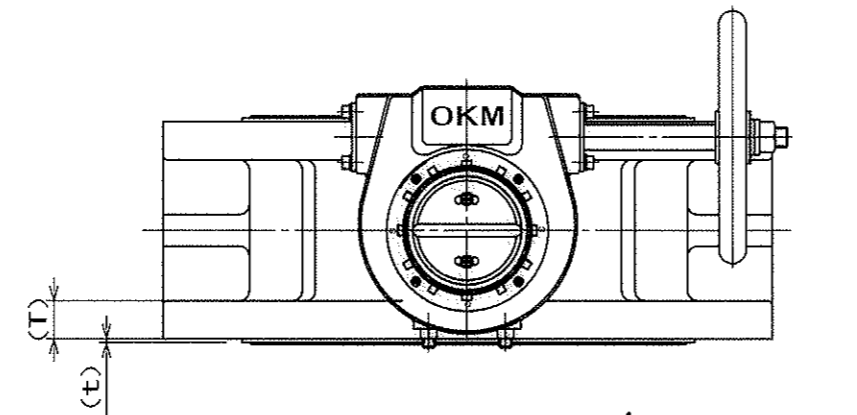
SIZE	JIS10K					JIS16K/20K					ASME125Lb/150Lb				
	C	N	n	h	M	C	N	n	h	M	C	N	n	h	M
250A	355	4/12	8/12	25	M22	380	4/12	8/12	27	M24	362	4/12	8/12	25	7/8-9UNC
300A	400	4/16	12/16	25	M22	430	4/16	12/16	27	M24	431.8	4/12	8/12	25	7/8-9UNC

Table 1	Table 2
SCS13	NBR *1
SCS14	EPDM*2

製 番
MFG. NO.

名称及形式
NAME AND TYPE
**MODEL 618F (250A, 300A)
BUTTERFLY VALVES WITH
WORM GEAR OPERATOR**

番号 NO.	部品名称 PARTS NAME	材 質 MATERIAL	数量 Q. ty	備 考 REMARKS
1	BODY	FCD450	1	
2	DISC	See Table 1	1	
3	SEAT RING	See Table 2	1	LINING
4	UPPER STEM	SUS420J2	1	
5	LOWER STEM	SUS420J2	1	
6	BUSH	PLASTIC	1set	
7	RING	SUS304	1set	
8	NECK BUSH	PLASTIC	1	
9	SCREW	SUS304	2	
10	O-RING	See Table 2	1set	
11	PLATE	SPCC	1	PLATED
12	SEAL RING	PLASTIC	1	
13	COVER	SS400	1	PLATED
14	GASKET	See Table 2	1	
15	COVER BOLT	SUS304	4	
16	SPRING WASHER	SUS304	4	
17	GEAR BOX	FC250	1	
18	HAND WHEEL	FC250	1	
19	STUD BOLT, NUT	SGD SWRCH	4	PLATED
20	SPRING WASHER	SWRH	4	PLATED
21				
22				
23				
24				
25				



日付 DATE JUL. 20. 2016 尺 度 SCALE FREE

使用圧力 WORKING PRESSURE Max 1.6 MPa 使用温度*1: -10~70℃ WORKING TEMP. *2: -20~120

耐圧試験 SHELL TEST 2.4 MPa 試験流体 TEST FLUID WATER

弁座試験 SEAT TEST 1.8 MPa 許容漏れ LEAKAGE 0%

作成 DRAWN yk 検討 CHECKED abei 承認 APPROVED Horio

OKM 株式会社 オークエム OKUMURA ENGINEERING corp.

図面番号 DRAWING NO. 618F GB 0106 E FLOP. No. Hd-Ian975

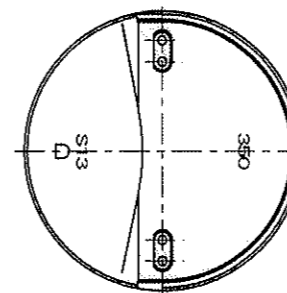
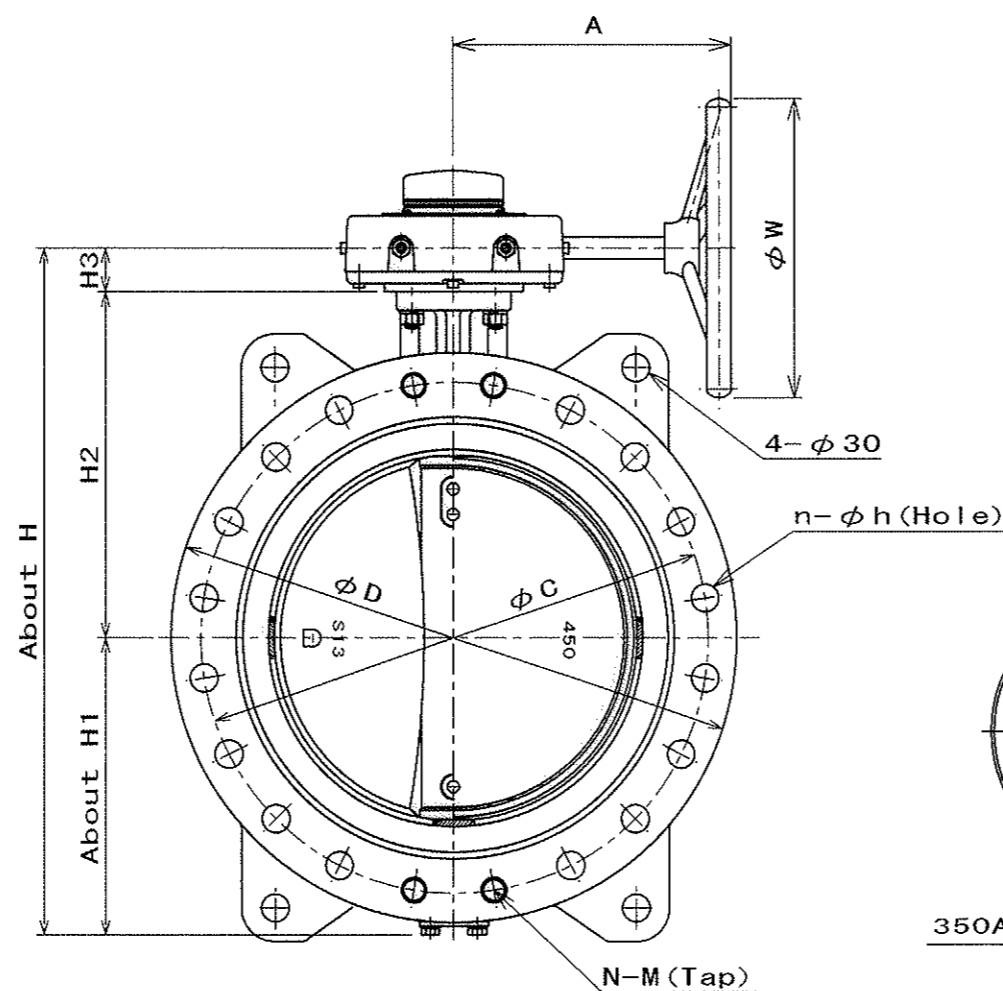
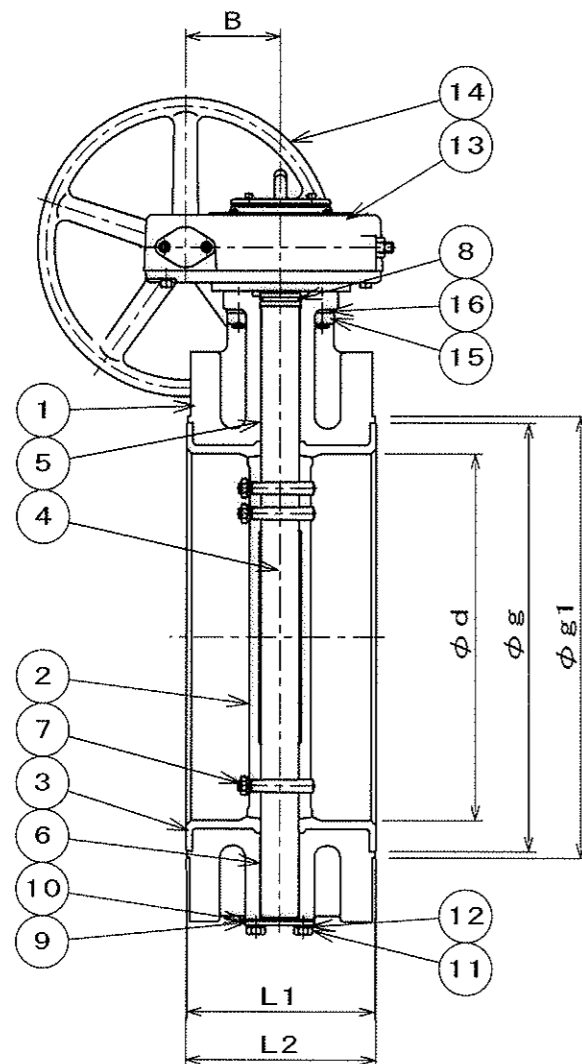
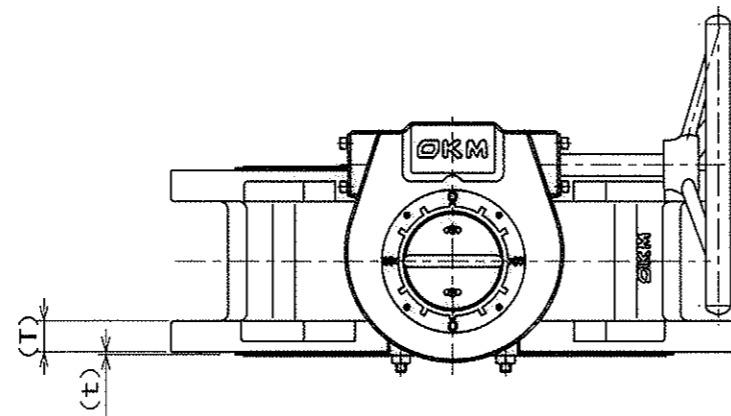
SIZE	d	D	L1	L2	g	g1	H	H1	H2	H3	T	t	A	B	W	GEAR SIZE	MASS (About)
350A	333	540	190	193	389	403	671	286	340	45	37	3	320	97.1	315	100K	150kg
400A	384	605	216	219	447	463	741	321	375	45	43	3	320	97.1	315	100K	180kg
450A	434	675	222	225	507	523	816	353	410	53	45	3	331	114.5	355	160K	256kg

SIZE	JIS10K					JIS16K/20K					ASME125Lb/150Lb				
	C	N	n	h	M	C	N	n	h	M	C	N	n	h	M
350A	445	4/16	12/16	25	M22	480	4/16	12/16	33	M30×3	476.3	4/12	8/12	29	1 - 8UNC
400A	510	4/16	12/16	27	M24	540	4/16	12/16	33	M30×3	539.8	4/16	12/16	29	1 - 8UNC
450A	565	4/20	16/20	27	M24	605	4/20	16/20	33	M30×3	577.9	4/16	12/16	32	1 1/8 - 8UNC

Table 1

NBR *1

EPDM*2



350A:TAPER PIN DETAIL

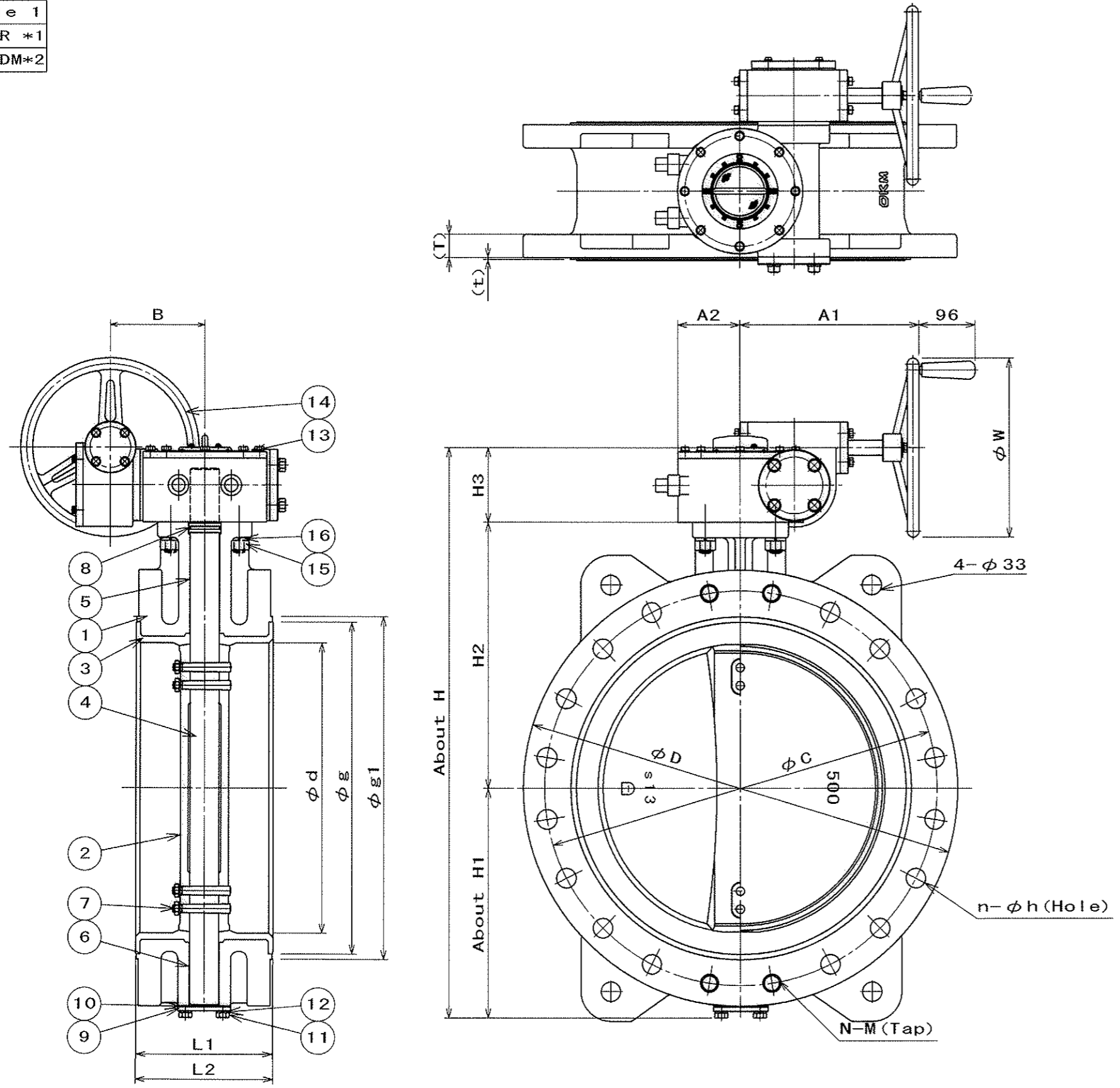
製 券 MFG. NO.		MODEL 618F (350A~450A) BUTTERFLY VALVES WITH WORM GEAR OPERATOR		
名称及形式 NAME AND TYPE				
番号 NO.	部品名称 PARTS NAME	材 質 MATERIAL	数量 Q. ty	備 考 REMARKS
1	BODY	FCD450	1	
2	DISC	SCS13	1	
3	SEAT RING	See Table 1	1	LINING
4	STEM	SUS403	1	
5	UPPER BUSH	SUS316 +PTFE	1	
6	LOWER BUSH	SUS316 +PTFE	1	
7	TAPER PIN	SUS304	4set 3set	350A 400A, 450A
8	O-RING	See Table 1	1	
9	COVER	SS400	1	PLATED
10	GASKET	NON- ASBESTOS	1	
11	BOLT	SWRCH	4	PLATED
12	SPRING WASHER	SWRH	4	PLATED
13	GEAR BOX	FC250	1	
14	HAND WHEEL	FC250	1	
15	STUD BOLT, NUT	SGD SWRCH	4	PLATED
16	SPRING WASHER	SWRH	4	PLATED
17				
18				
19				
20				
21				
22				
23				
24				
25				
日付 DATE	JUL. 20. 2016	尺 度 SCALE	FREE	
使用 圧 力 WORKING PRESSURE	Max 1.6 MPa P _e	使用 温 度*1 WORKING TEMP. *1	-10~70℃	
耐 圧 試 験 SHELL TEST	2.4 MPa P _e	使用 温 度*2 WORKING TEMP. *2	-20~120	
弁 座 試 験 SEAT TEST	1.8 MPa P _e	試 験 流 体 TEST FLUID	WATER	
		許 容 漏 れ LEAKAGE	0 %	
作 成 DRAWN	検 討 CHECKED	承 認 APPROVED		
株式会社 オークエム OKUMURA ENGINEERING corp.				
図 面 番 号 DRAWING NO.	618F GB 0107 E	FLOP. No.	HD	

SIZE	d	D	L1	L2	g	g1	H	H1	H2	H3	T	t	A1	A2	B	W	GEAR BOX SIZE	MASS (About)
500A	485	730	229	232	555	573	955	385	445	125	47	3	290	105	160	300	3D-250-01	294kg

SIZE	JIS10K					JIS16K/20K					ASME125Lb/150Lb				
	C	N	n	h	M	C	N	n	h	M	C	N	n	h	M
500A	620	4/20	16/20	27	M24	660	4/20	16/20	33	M30×3	635	4/20	16/20	32	1 1/8 - 8UNC

Table 1

NBR *1
EPDM*2



製 番
MFG. NO.

名称及形式
NAME AND TYPE

MODEL 618F (500A)
BUTTERFLY VALVE WITH
WORM GEAR OPERATOR

番号 NO.	部品名称 PARTS NAME	材 質 MATERIAL	数量 Q. ty	備 考 REMARKS
1	BODY	FCD450	1	
2	DISC	SCS13	1	
3	SEAT RING	See Table 1	1	LINING
4	STEM	SUS403	1	
5	UPPER BUSH	SUS316 +PTFE	1	
6	LOWER BUSH	SUS316 +PTFE	1	
7	TAPER PIN	SUS304	4set	
8	O-RING	See Table 1	1	
9	COVER	SS400	1	PLATED
10	GASKET	NON-ASBESTOS	1	
11	BOLT	SWRCH	4	PLATED
12	SPRING WASHER	SWRH	4	PLATED
13	GEAR BOX	FG200	1	
14	HAND WHEEL	FCD500	1	
15	STUD BOLT, NUT	SGD SWRCH	4	PLATED
16	SPRING WASHER	SWRH	4	PLATED
17				
18				
19				
20				
21				
22				
23				
24				
25				

日付
DATE JUL. 20. 2016

尺 度
SCALE FREE

使用 圧 力
WORKING PRESSURE Max 1.6 MPa
Pe

使用 温 度*1
WORKING TEMP. *1: -10~70 °C

*2: -20~120

耐 圧 試 験
SHELL TEST 2.4 MPa
Pe

試 験 流 体
TEST FLUID WATER

弁 座 試 験
SEAT TEST 1.8 MPa
Pe

許 容 漏 れ
LEAKAGE 0 %

作 成
DRAWN *Yh*

検 討
CHECKED *abi*

承 認
APPROVED *Horio*

OKM 株式会社 オークエム
OKUMURA ENGINEERING corp.

図 面 番 号
DRAWING NO. 618F GB 0108 E

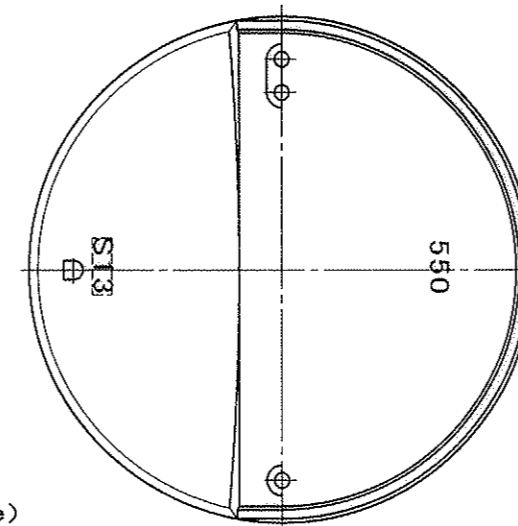
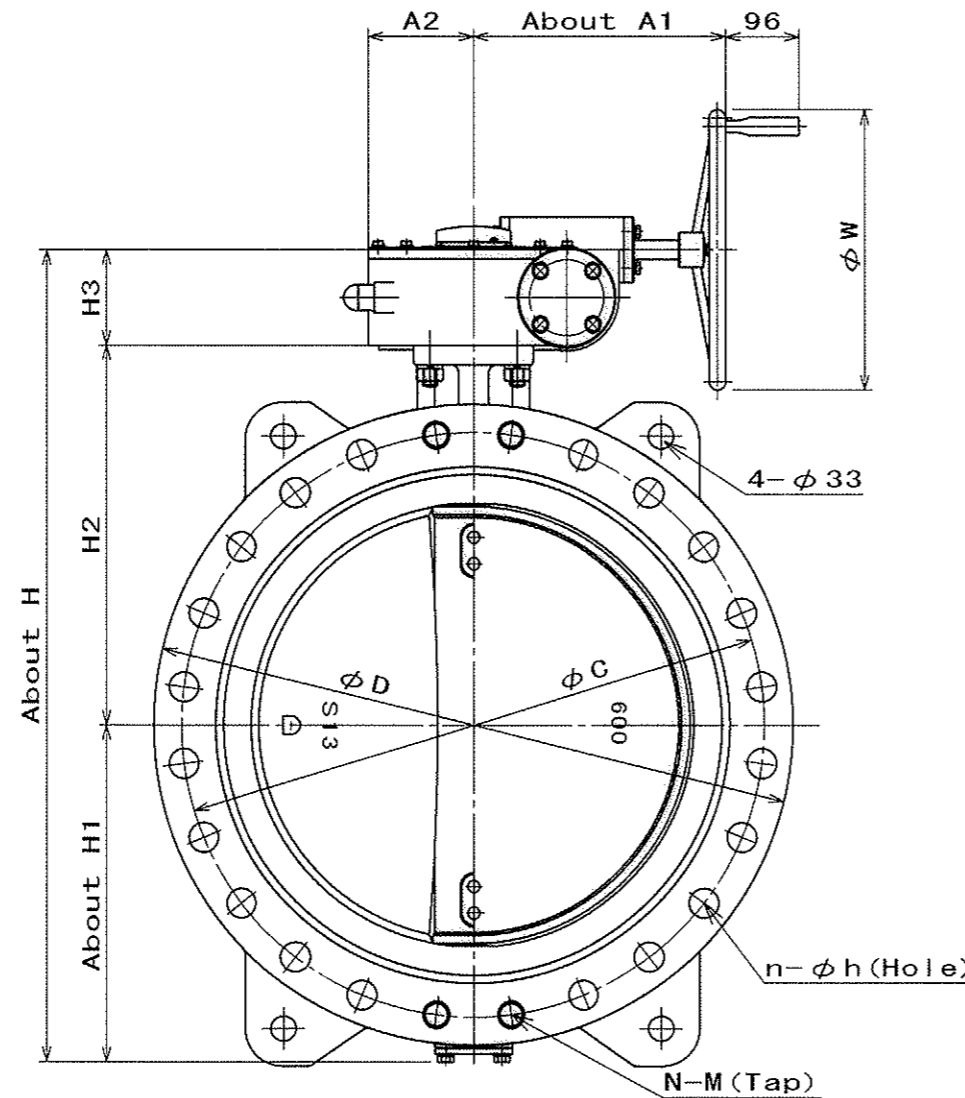
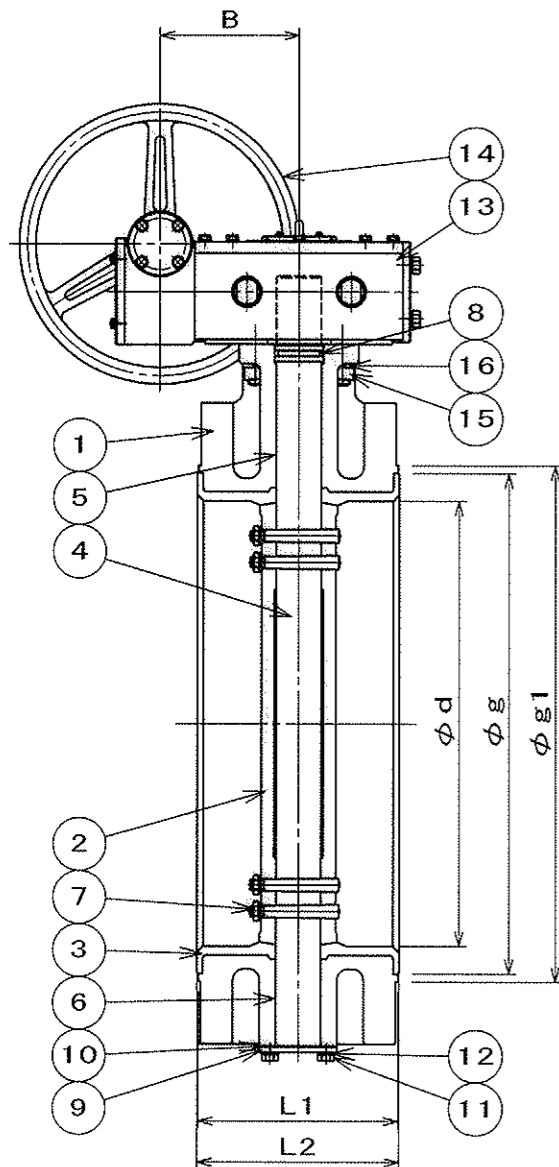
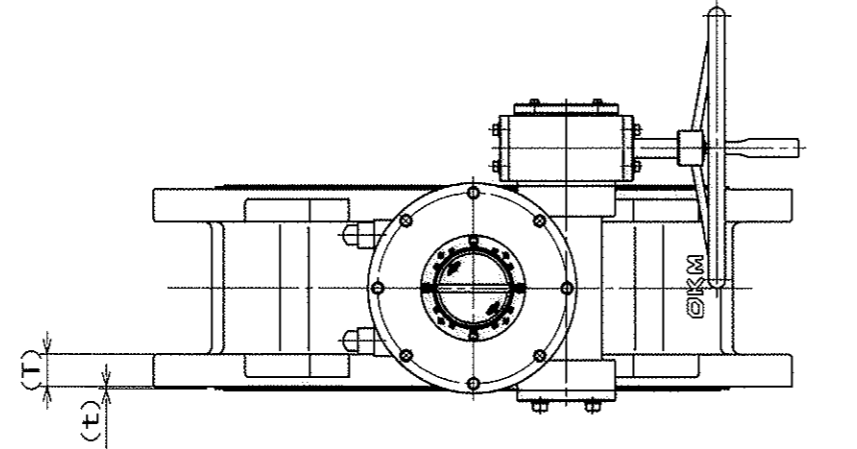
FLOP. No.
Hd-1an975

SIZE	d	D	L1	L2	g	g1	H	H1	H2	H3	T	t	A1	A2	B	W	GEAR SIZE	MASS (About)
550A	535	795	267	270	613	630	1021	420	475	126	49	3	325	139	185	390	3D-400-01	390kg
600A	586	845	267	270	659	680	1071	445	500	126	51	3	325	139	185	390	3D-400-01	436kg

SIZE	JIS10K					JIS16K/20K					ASME125Lb/150Lb				
	C	N	n	h	M	C	N	n	h	M	C	N	n	h	M
550A	680	4/20	16/20	33	M30	720	4/20	16/20	39	M36×3	—	—	—	—	—
600A	730	4/24	20/24	33	M30	770	4/24	20/24	39	M36×3	749.3	4/20	16/20	35	1 1/4-8UNC

Table 1

NBR *1
EPDM*2



550A TAPER PIN DETAIL

製番 MFG. NO.		名称及形式 NAME AND TYPE		
		MODEL 618F (550A, 600A) BUTTERFLY VALVE WITH WORM GEAR OPERATOR		
番号 NO.	部品名称 PARTS NAME	材質 MATERIAL	数量 Q. ty	備考 REMARKS
1	BODY	FCD450	1	
2	DISC	SCS13	1	
3	SEAT RING	See Table 1	1	LINING
4	STEM	SUS403	1	
5	UPPER BUSH	SUS316 +PTFE	1	
6	LOWER BUSH	SUS316 +PTFE	1	
7	TAPER PIN	SUS304	3set 4set	550A 600A
8	O-RING	See Table 1	1	
9	COVER	SS400	1	PLATED
10	GASKET	NON-ASBESTOS	1	
11	BOLT	SWRCH	4	PLATED
12	SPRING WASHER	SWRH	4	PLATED
13	GEAR BOX	FCD500	1	
14	HAND WHEEL	FCD500	1	
15	STUD BOLT, NUT	SGD SWRCH	4	PLATED
16	SPRING WASHER	SWRH	4	PLATED
17				
18				
19				
20				
21				
22				
23				
24				
25				

日付 DATE	JUL. 20. 2016	尺度 SCALE	FREE
使用圧力 WORKING PRESSURE	Max 1.6 MPa Pe	使用温度*1: -10~70℃ WORKING TEMP. *2: -20~120	
耐圧試験 SHELL TEST	2.4 MPa Pe	試験流体 TEST FLUID	WATER
弁座試験 SEAT TEST	1.8 MPa Pe	許容漏れ LEAKAGE	0 %
作成 DRAWN	検討 CHECKED	承認 APPROVED	
OKM		株式会社オーケーエム OKUMURA ENGINEERING corp.	
図面番号 DRAWING NO.	618F GB 0109 E		FLOP. No. Hd-1an975